



ALTIMETRIK  
Simplify technologies. Amplify possibilities.

GO  
playground



# Eclipse Che User Guide

- Draft v2.0

## Overview

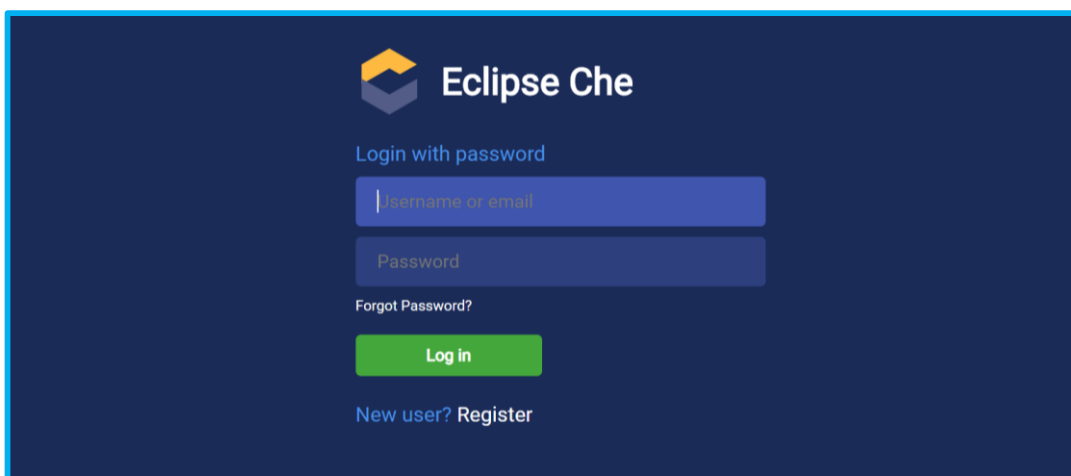
This document provides you information on the following:

- Runtime environment for your project/application &
- Connecting to the Local Database

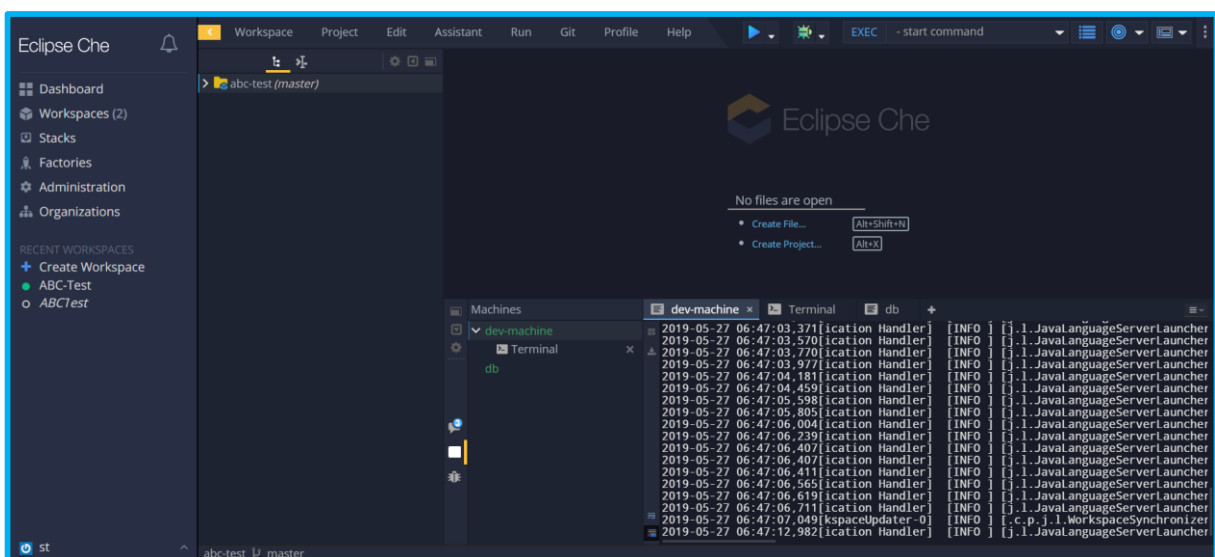
## Runtime Environment for your Project/Application

### To execute your project

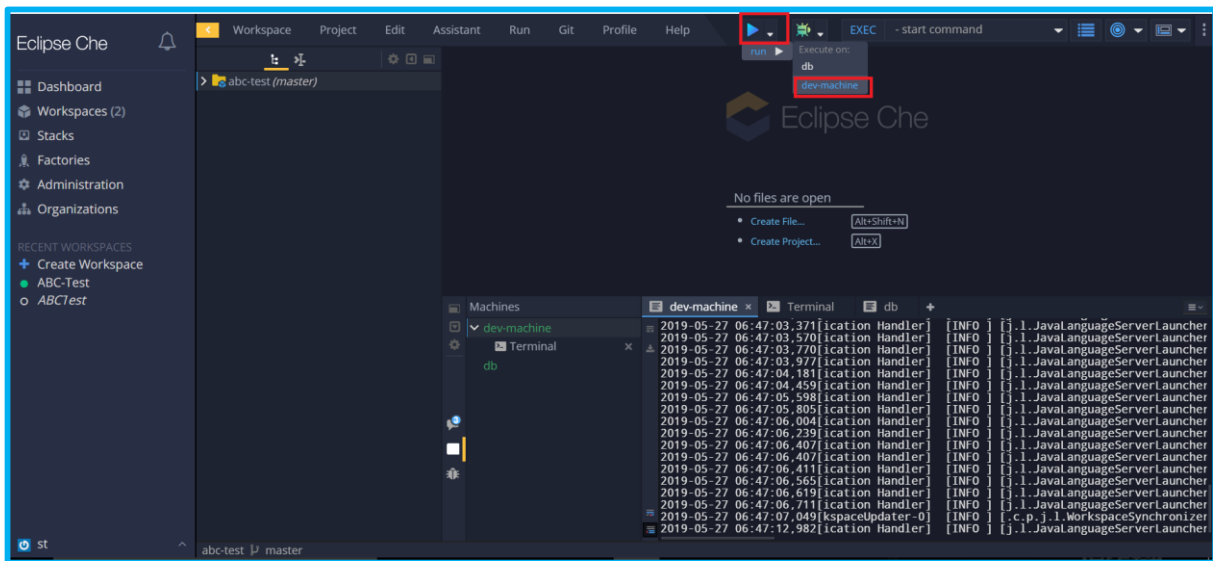
1. After you create your project workspace in Playground, click the **Eclipse Che URL** and login with your credentials.



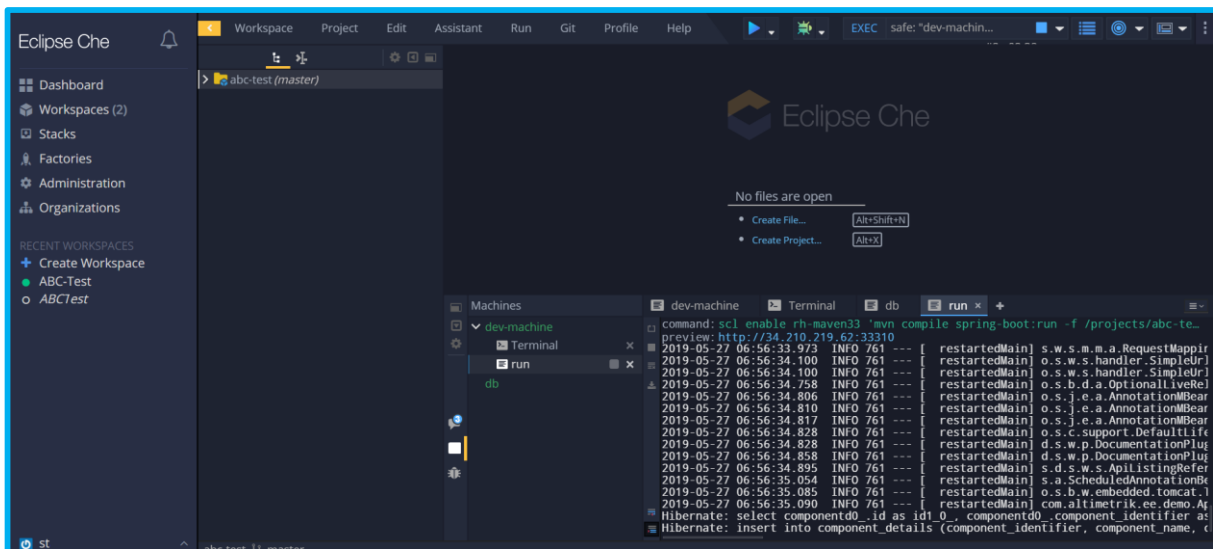
The Home page is displayed with your project, which has been imported.



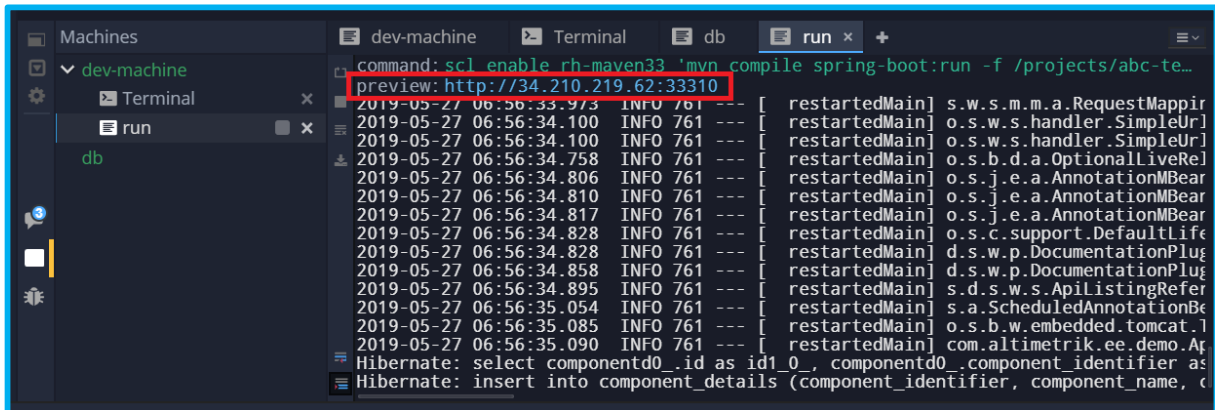
## 2. Execute the **Run** command, by selecting **dev-machine**.



Now, the project starts executing and the logs for the same are displayed.



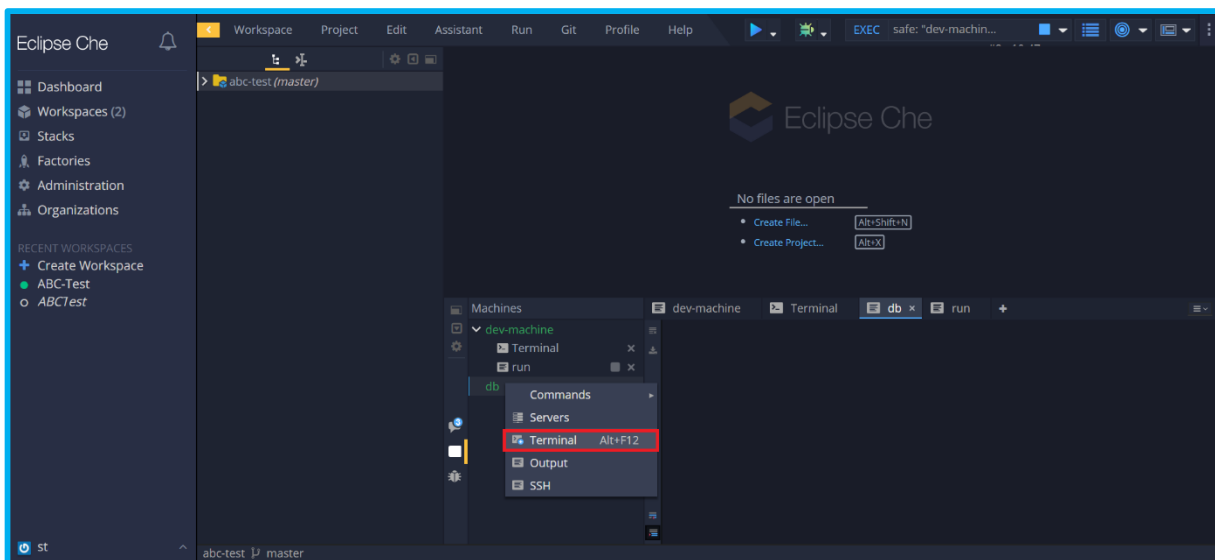
**Note:** The application URL is displayed under *Preview*. Using this URL, you can access your application.



## Connecting to the Local Database

To connect to the Local Database

1. Right-click **db** under **Machines** and click **Terminal**.



2. Click the **Terminal** tab that is generated and run the following command:  
**mysql service start** and then press ENTER.

Fig 1

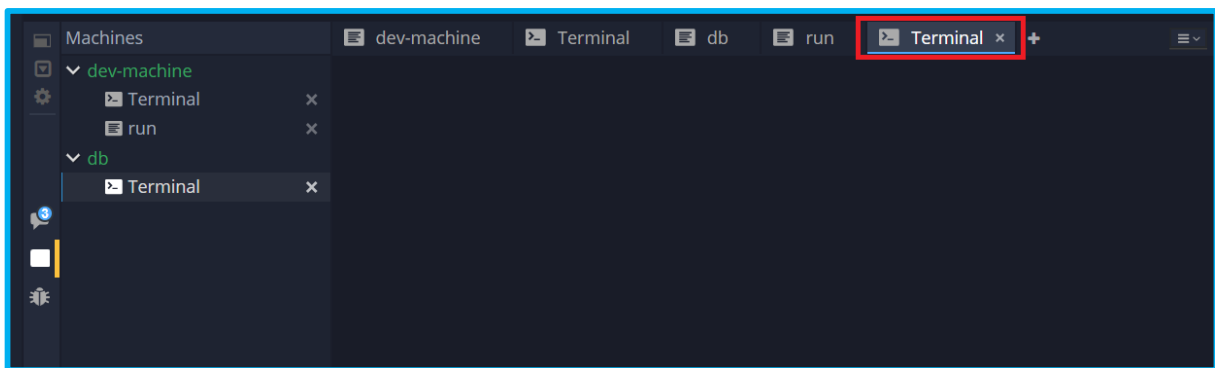
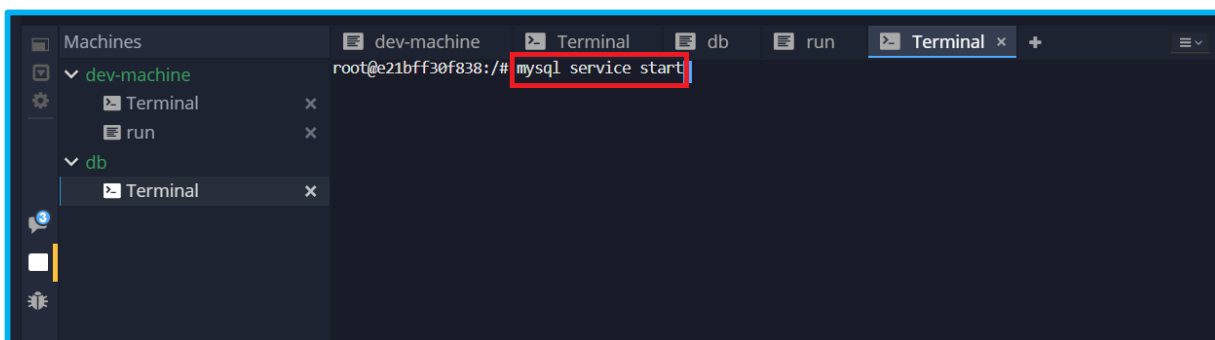
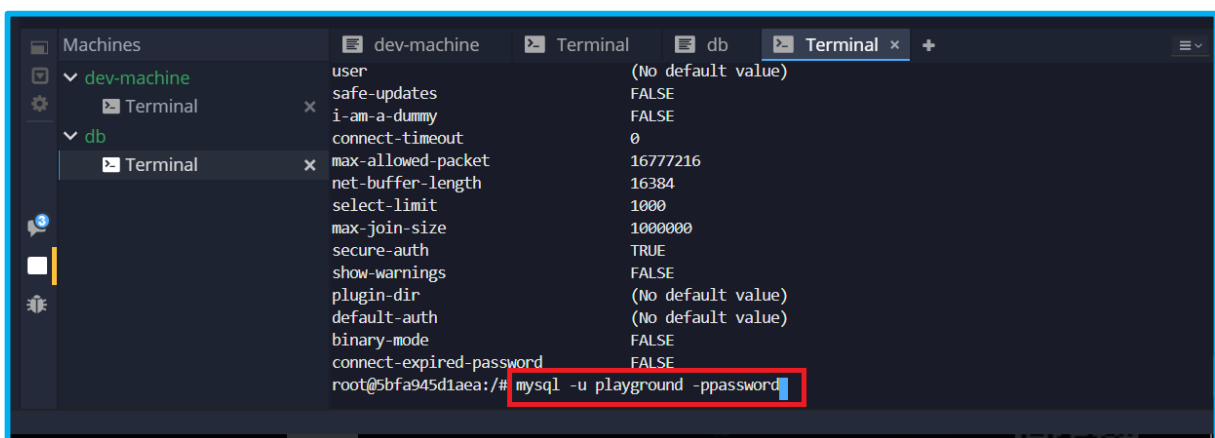


Fig 2

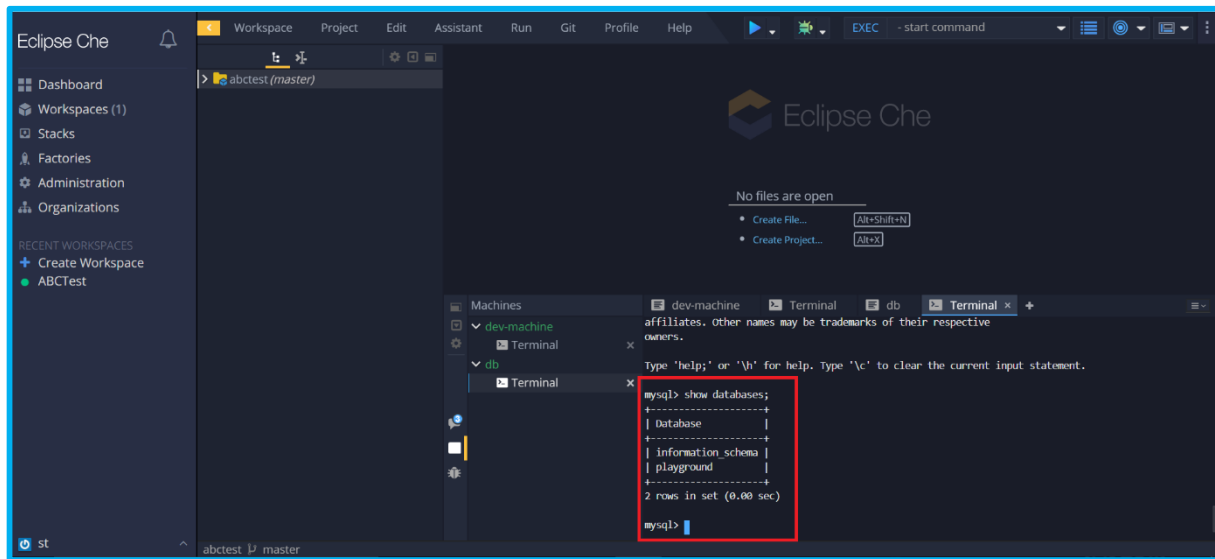


The Local Database is started.

3. Connect to the Local DB with the following command:  
**mysql -u playground -ppassword** and press ENTER.



Now, you can execute any valid DB statement or query.





ALT:METRIK  
Simplify **technologies.** Amplify **possibilities.**